

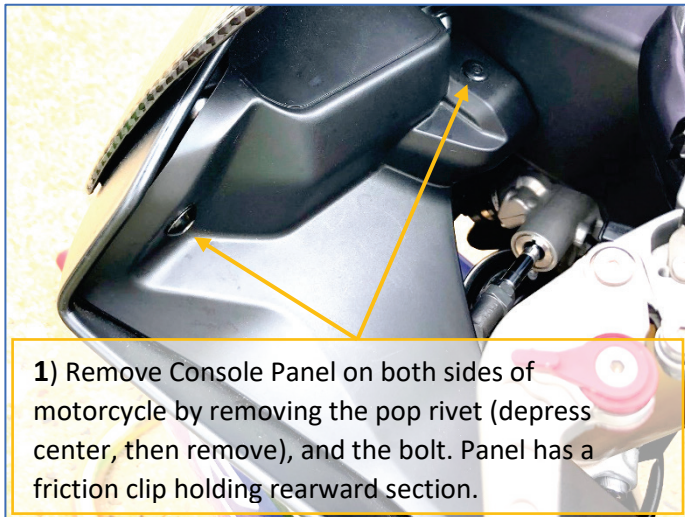


# CUSTOMLED 2015+ YZF-R1/M Blinker Genie

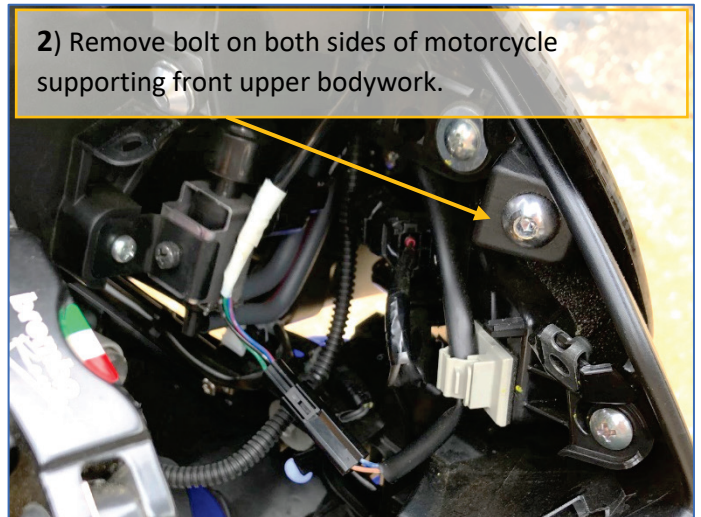
## Illustrated Installation Instructions

This 100% plug-and-play kit allows for run and turn operation of the OEM pilot light assemblies 😊

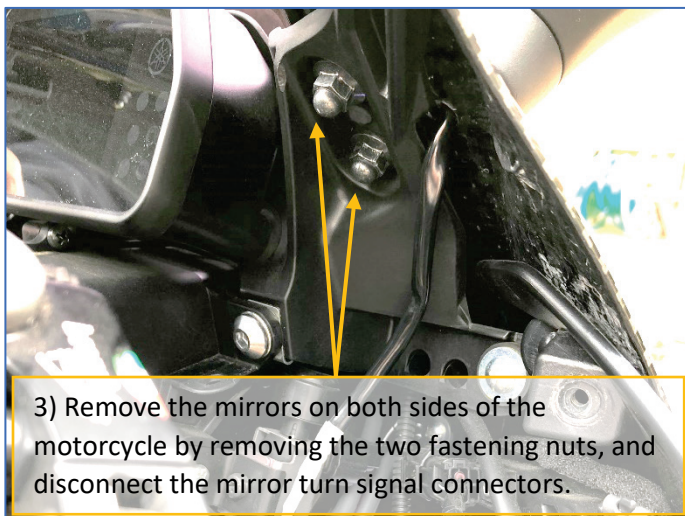
**NOTE:** 2022+ YZF-R1 has additional L/R body components to remove on front cowling, which are not shown in these instructions.



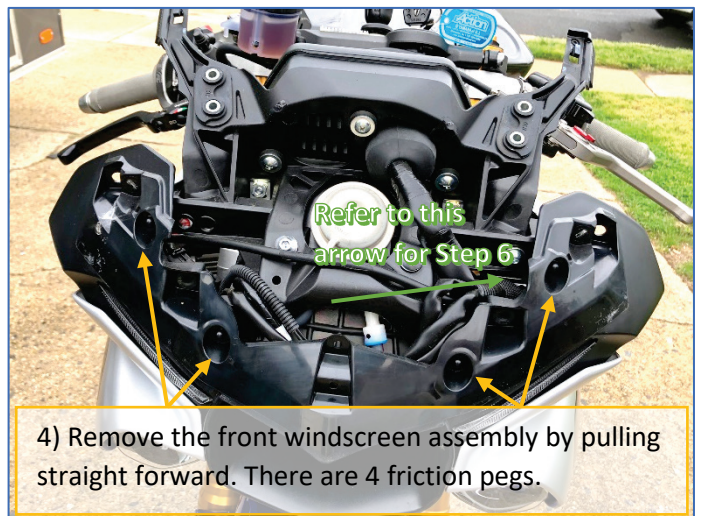
1) Remove Console Panel on both sides of motorcycle by removing the pop rivet (depress center, then remove), and the bolt. Panel has a friction clip holding rearward section.



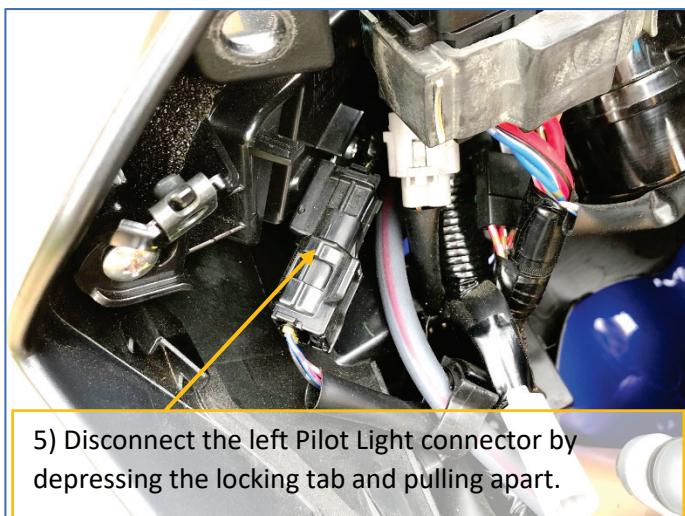
2) Remove bolt on both sides of motorcycle supporting front upper bodywork.



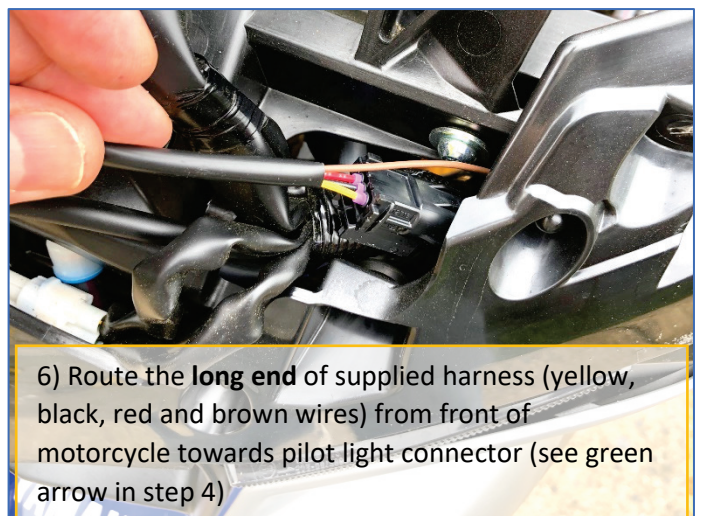
3) Remove the mirrors on both sides of the motorcycle by removing the two fastening nuts, and disconnect the mirror turn signal connectors.



4) Remove the front windscreen assembly by pulling straight forward. There are 4 friction pegs.

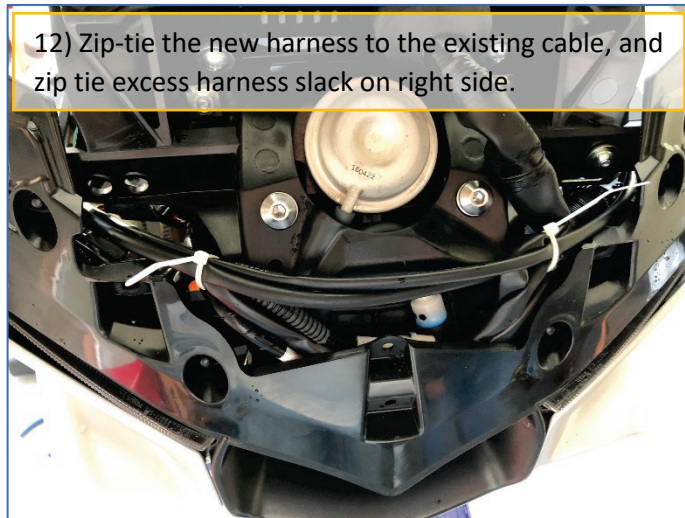
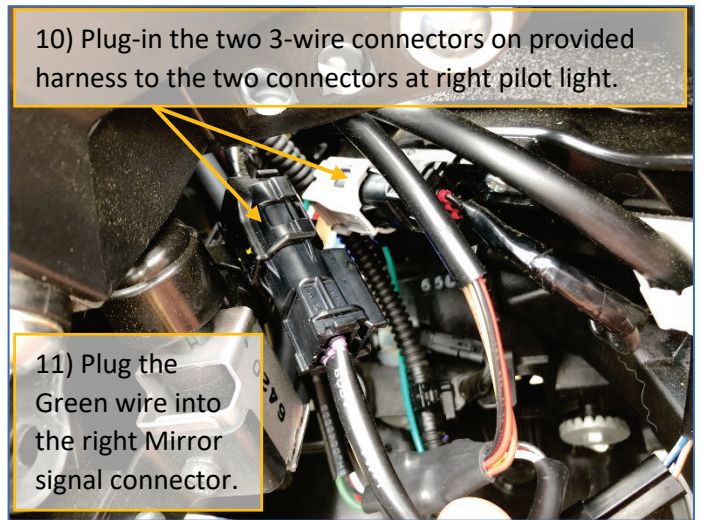
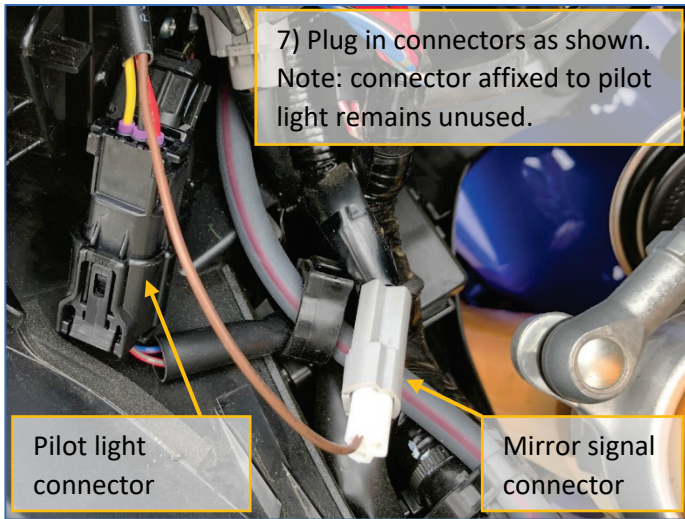


5) Disconnect the left Pilot Light connector by depressing the locking tab and pulling apart.



6) Route the **long end** of supplied harness (yellow, black, red and brown wires) from front of motorcycle towards pilot light connector (see green arrow in step 4)

(continued on other side)



**Thank you** for choosing Custom LED, and supporting USA manufacturing. Please help spread the word! You can share Video of this product in action on **YouTube**, and share your pre and post-install pictures on **Instagram**. Be sure to tag us **@Custom\_LED\_LLC** in the pictures so they will appear on our website Instagram feed!